






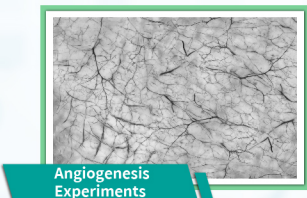
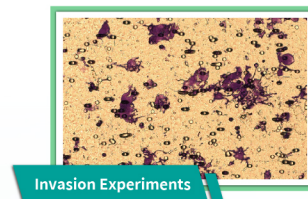


Leadgene-ScaffoldForm 3D Culturing Gel

Characteristics

-  Bio-Synthesis
-  Bio-Compatibility
-  Stable
-  High Throughput
-  Easy
-  Tunable
-  Efficiency



Competitive Product Analysis

Function	Leadgene® ScaffoldForm3D Culturing Gel	Comparison-1	Comparison-2
Component Stability	-	Complex composition with batch variation	-
Additives	Additional ingredients can be added	Not appropriate	Additional ingredients can be added
Gel Stiffness	Adjustable range: 1000~20000 pa	440 pa	Adjustable range: 80~510 pa
Uniform Gel Dome	✓	✓	-
Liquid-Form Temperature	> 10°C	> 10°C	> 10°C
Gelation Time	< 20 min	> 20 min	> 20 min
Gel Dissolving Time	< 5 min, Dissolving rate 100%	> 30 min, Dissolving rate 30~50 %	> 30 min, Dissolving rate 30~50 %
Spheroid Recovery	> 90%	30-50 %	30-50 %

Procedure

Gelation Protocol:



Dissolving Protocol:

